

HOW TO TAKE CARE OF YOUR BOTTLE

Outer bottle, lid set

Please wash the outer bottle and lid set with warm water and then wipe it with dry cloth.
※ Please remove the lid set before washing.

Inner bottle

Please use a soft sponge with handle to wash the inner bottle thoroughly. It will keep your bottle clean and prevent unpleasant odors.

Gasket

It may cause water leakage if there is a foreign object on the gasket. Remove the gasket from the lid or stopper. Wash with warm water and then wipe the gasket with dry cloth. After that, refer to the "How to install the gasket" section to reinstall the gasket correctly.

Pouch

- ① Please use wet cloth and wipe the pouch gently.
- ② Allow the pouch to air dry after cleaning.

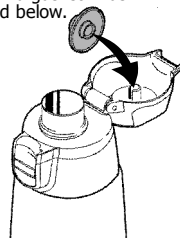
HOW TO INSTALL THE GASKET

The bottle will leak if the gaskets are not properly installed.

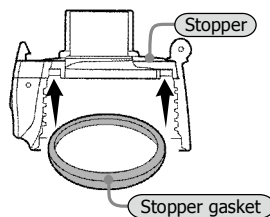
Please read below content carefully to reinstall the lid gasket and stopper gasket after you clean the bottle every time.

Install the lid gasket

Push the lid gasket in as illustrated below.



※ Make sure the gaskets are set securely to prevent beverages from spilling.



Install the lid gasket
Ensure the stopper gasket is set properly on the grooves of the stopper.

BEFORE CONTACT OUR SERVICE CENTER

Please check your bottle before you contact our service center. If what you encountered is not described below, please contact our service center.

SYMPTOM	CHECK POINT	WAYS TO HANDLE WITH
■ Water leaks from the lid	Make sure the stopper gasket is placed properly on the lid.	Please refer to the how to install the gasket section in this manual.
	Make sure the safety lock is locked and the stopper is closed securely.	Check the safety lock again and close the stopper properly.
	Is there any dirt on the stopper gasket?	Please refer to the "how to clean section" in this manual.
■ Bad odor from inner bottle or lid	Did you fill too much water in the bottle?	Please pour out some beverage from the bottle.
	Check if there is any beverage stain on the inner wall of the bottle or gaskets?	Please refer to the how to clean section in this manual to clean the bottle thoroughly. Use vinegar to clean the bottle if the dirt is hard to remove.
■ Bad cold retention	Make sure the beverage is cold enough in the bottle.	Please pour proper amount of cold beverage in the bottle.

※ Stopper gasket, lid gasket and lid set are consumable parts. Please check once every 6 months to 1 year for damage or deterioration.

TO REMOVE RUST SPOTS AND WATER STAINS

You may find rust spots or water stains caused by the impurities in your drinking water. To remove these, fill the bottle with hot water and then add 10% vinegar in it. Put the bottle aside for about 3 hours. After that, wash the interior of the bottle thoroughly with a soft sponge.

※ To prevent the unpleasant odor, please clean the bottle thoroughly before and after use.

※ Please make sure you clean the bottle with a **soft** sponge to protect the surface of the inner bottle from being scratched.

ABOUT PARTS FOR AFTER SERVICE

We will keep the consumable parts mentioned in this manual for 5 years after we discontinued the production of this model.
If you have any questions regarding to our products, please contact the store where you purchase the product or call our Peacock Customer Service Center.

CONSUMABLE PARTS

AJC.ADL.ADX TYPE

Stopper gasket	
Lid gasket	
Lid set (Stopper, Stopper gasket, Lid gasket)	

Peacock

COLD ONLY

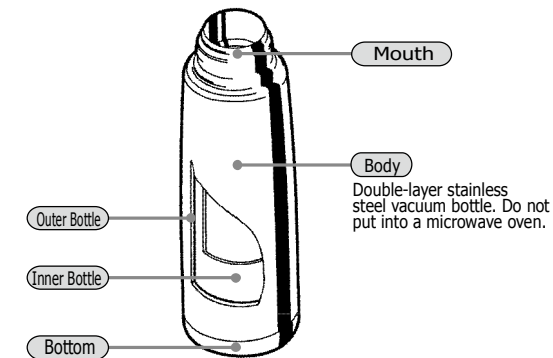
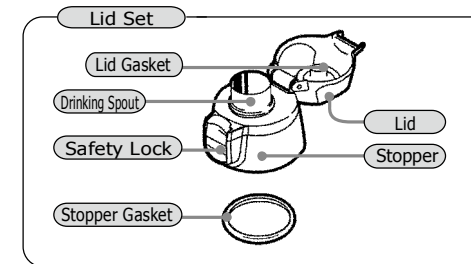
**STAINLESS STEEL BOTTLE
DIRECT DRINK**

**AJC • ADZ
ADL • ADX**

**USER
INSTRUCTION
MANUAL**

Thank you for purchasing our product. Before using this unit, please read the instruction carefully to ensure the best possible performance.

PARTS



Double-layer stainless steel vacuum bottle. Do not put into a microwave oven.

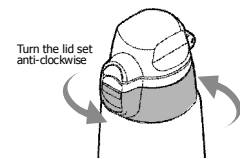
Actual products may vary from the product illustrated.

Please store your instruction manual in a safe place for future reference.

INSTRUCTIONS

1 Remove the lid set

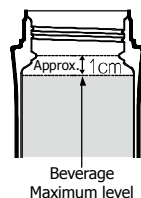
Remove the lid set by turning it anti-clockwise.



2 Fill the bottle with cold beverage

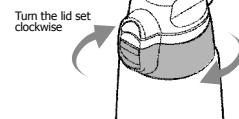
※ To increase the cold retention, pour cold water into the bottle and precool the bottle for about 1 minute.

※ Please refer to the right drawing for the maximum level of the beverage.



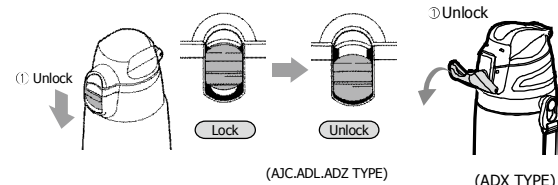
3 Close the lid set tightly

Turn the lid set clockwise to close the bottle.



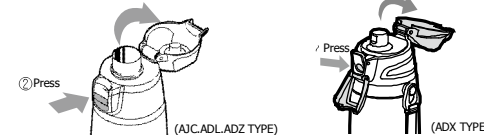
4 Open the lid and enjoy your beverage

① Make sure the product is in upright position before unlocking the safety lock.



Please clean the inner bottle, lid set thoroughly before use.

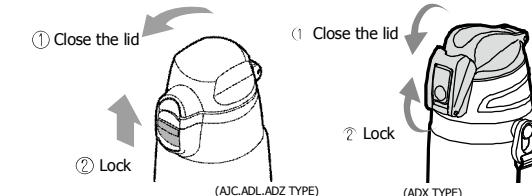
② Press the safety lock button (AJC.ADL.ADX Type) or push button (ADX Type) to open the bottle lid. Tilt the bottle while drinking the beverage.



5 After enjoying your beverage

① After drinking, make sure the bottle is in upright position and then close the lid securely.

② Lock the safety lock.



IMPORTANT SAFEGUARDS

● Do not use this product for any purpose other than keeping beverages cold.

● Keep out of reach of infants and small children. (There is a risk of injuries.)

● Do not put hot beverages into this bottle. (There is a risk of scalding.)

● Please consume the beverage within the same day to prevent from spoiling.

● After drinking, make sure the bottle is in upright position, close the lid and then lock the safety lock. (The beverages inside may leak if the safety lock is not locked)

IMPORTANT SAFEGUARDS

Continued

● Do not place the product near gas stoves, ovens or heaters. (To prevent deformation or discoloration.)

● Please make sure the lid and stopper units are set properly before using the bottle. (The beverages inside may leak)

● Please fill the beverages within the maximum level of the bottle as described in this instruction.

● Do not disassemble or attempt to repair this product by yourself.

● This product should not be filled with any of the following items:

● Dry ice or beverages containing carbon dioxide
The pressure inside the product will increase, causing the cap set hard to open or the beverage to spout out and possibly cause injuries.

● Miso soup or other beverages containing salt
The salt will stick to the sides of the inner bottle and cause rust.

● Milk based beverages or fruit beverages
Prolonged storage may spoil the beverages. This will increase the pressure inside the product and cause the beverage to spout out and possibly cause injuries.

● Fruit pulp, tea or other kinds of leaves
These may cause water leakage and possible malfunctions.

● Do not wash the bottle under water when clean. After cleaning, wipe off the water on the bottle thoroughly.

● After cleaning the stopper unit, wipe off the water on the unit thoroughly. (The foreign object on the gasket may cause leakage)

● Do not boil the bottle or use dishwasher or dish-dryer to clean and dry the bottle. (It may cause rust, deformation or damage to the bottle.)

IMPORTANT NOTICE

● Avoid dropping, hitting or strong shock against the bottle. (It may damage the stainless steel surface of the bottle and reduce its ability of cold retention.)

● Do not use thinner, benzene, abrasive cleaners or metal brush to clean your bottle. (To avoid any damage to the bottle.)

IMPORTANT NOTICE

Continued

● Do not use chlorine bleach. (It may cause rust on the inner surface of the bottle or malfunction)

● Do not force large ice cubes into the bottle. Forcing or hitting the ice cubes may cause deformation or malfunction of the bottle.

● Do not put the bottle in a refrigerator. (It may affect the cold retention or cause malfunction)

● When holding a bottle, do not hold only its stopper unit or lid. (It may drop and cause injuries.)

● Do not use the product while driving. (To prevent staining the interior of the car or clothes. Attempting to use the bottle while driving may distract the driver and may lead to serious accidents.)

● When using a car cup holder
● Make sure the cup holder is strong enough to hold the bottle before using. If the cup holder does not hold up, it may cause injuries or burns, or stain the interior of the car or clothes.

● Do not use the hanging-type cup holder that attaches to the window or air vent. The cup holder may fall off.

● Do not place the product with computer, mobile, digital camera and other electronic gadgets. (To avoid water leakage and damage the gadgets.)

● Please make sure the bottle is put upright when stored in a carrying bag to prevent the beverages from spilling.

● About the Pouch (ADL.AJC.ADX TYPE)

● Do not hold the belt of the pouch and swing the product around.
● It is very dangerous to hang the belt on the neck and play around.

● The pouch may discolor due to the abrasion or water leakage when using the bottle.

● Do not place the product into the pouch when the bottle is wet.

● Do not wash the pouch.